

DEPARTMENT OF THE ARMY SUPPLY BULLETIN

REPAIR OF NCR 500
PRINTED CIRCUIT CARDSHeadquarters, Department of the Army, Washington, D.C.
16 May 1978

1. Purpose. This bulletin establishes the procedures to be followed by DSU GS units authorized the NCR 500 System (AN MYK-7) for the repair of defective NCR 500 printed circuit cards.

2. General. Each NCR 500 system was initially shipped with an adequate onsite inventory of parts, tools and test equipment. Initial spares of printed circuit cards were included. As these cards become unserviceable, the initial spares are installed in these systems by the assigned ADP repair technician (MOS 34E) and/or NCR maintenance personnel. Unserviceable printed circuit cards for NCR 500 equipments in 8th US Army and USAREUR will be evacuated to designated in-country depots for repair, return, or replenishment. Unserviceable printed circuit cards beyond the capability of the above repair facilities will be evacuated to Lexington-Bluegrass Army Depot, ATTN: SDSRR-LSP-1, Lexington, Ky, 40507. Other Army commands will ship unserviceable cards directly to Lexington-Bluegrass Army Depot when repair is beyond their capability.

3. Jiffy Bags. Return of unserviceable printed circuit cards will be accomplished by the use of preaddressed jiffy bags. Jiffy bags are Stock Funded and can be obtained by processing funded

Multistrip Requisitions to USACERCOM, Fort Monmouth, New Jersey 07703 (Routing Identifier Code B16). Disposition of the printed circuit card, as recommended by the DSU GSU, will be annotated by an X in the appropriate block on the face of the jiffy bag. In addition, the NCR part number, nomenclature and quantity data will be shown. Only one defective unit will be placed in each jiffy bag. DA 2407 (Maintenance Request) must be completed and accompany the unit being returned to Lexington-Bluegrass Army Depot. The NSNs and size of the various jiffy bags are listed below:

Number	Size	NSN
0	6" X 10"	8105-00-421-1731
3	8 1/2" X 14 1/2"	8105-00-421-1734
7	14 1/2" X 20"	8105-00-421-1737

4. Repair and Return Procedure. Upon receipt of unserviceable printed circuit cards, Lexington-Bluegrass Army Depot (LBAD) will obtain repair service for repairables through the NCR World-Wide Parts Center, 200 Highway, 74 South, Peach Tree City, Georgia 30269. Upon completion of repairs and acceptance by LBAD, serviceable printed circuit cards will be returned in consonance with instructions shown on jiffy bags.

5. Queries. Any queries concerning the contents of this bulletin should be directed to Commander, US Army Communications and Electronics Materiel Readiness Command, ATTN DRSEL-MMR-MT-1, Fort Monmouth, New Jersey 07703.

By Order of the Secretary of the Army:

BERNARD W. ROGERS
General, United States Army
Chief of Staff

Official:

J. C. PENNINGTON
Brigadier General, United States Army
The Adjutant General

Distribution:

Active Army

USAINSCOM (2)
COE (1)
TSG (1)
USAARENBD (1)
DARCOM (1)
TRADOC (1)
OS Maj Comd (4)
TECOM (2)
USACC (4)
MDW (1)
Armies (2)
Corps (2)
Svc Colleges (1)
USASIGS (5)
USAADS (2)
USAFAS (2)
USAARMS (2)
USAIS (2)
USAES (2)
USAICS (3)
MAAG (1)
USARMIS (1)
USAEFDAA (1)
USAERDAW (1)

USAREUR (10)
Ft Monmouth (HISA) (33)
Ft Richardson (CERCOM) (2)
Fort Gillem (10)
Fort Gordon (10)
Fort Huachuca (10)
Fort Carson (5)
Army Dep (1) except
 LBAD (14)
 SAAD (30)
 TOAD (14)
 SHAD (3)
USA Dep (1)
Sig Sec USA Dep (1)
Units org under fol TOE
(1 ev each unit UNOINDC)
 29-207 (2)
 29-610 (2)
 11-97
 11-98
 11-117
 11-127
 11-500(AA-AC)
 29-134
 29-136

NG None

USAR None

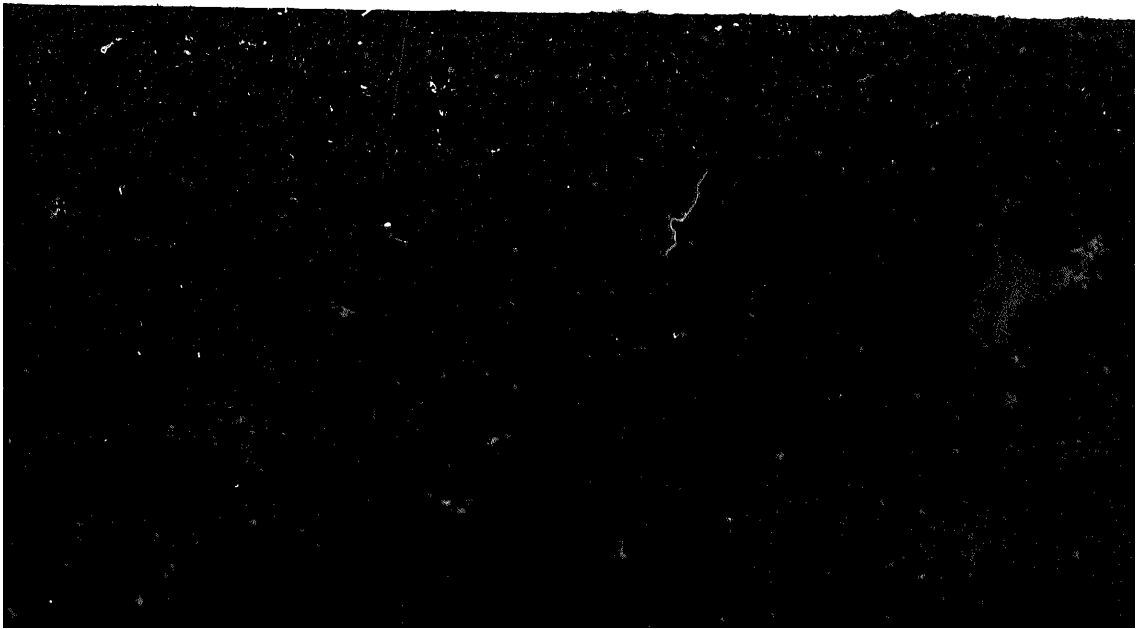
For explanation of abbreviations used, see AR 310-50

END

7-18-83

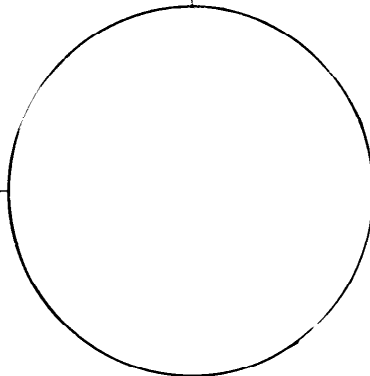
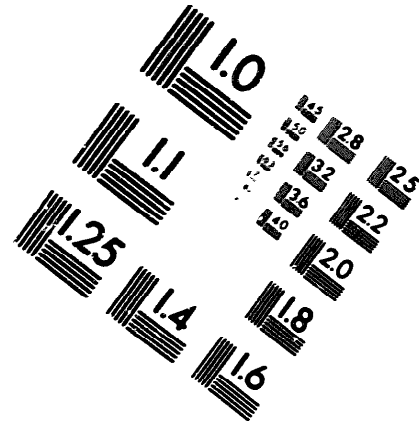
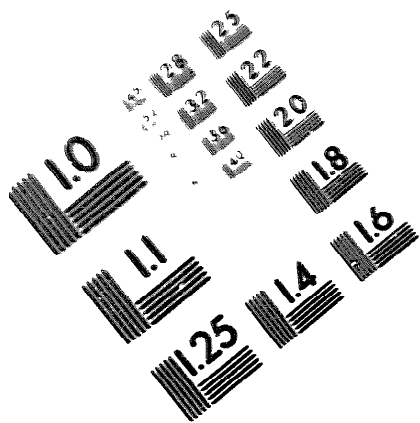
DATE





DEPARTMENT OF THE ARMY

MICROFORM TEST TARGET



150 MM

0 mm = 81 mm

10 mm = 81 mm

ABCDEFGHIJKLMN O P Q R S T U V W X Y Z 1 2 3 4 5 6 7 8 9 0
abcdefghijklmnopqrstuvwxyz \$ % & / ' 1/2 1/4 3/4 --- = + x & @ *

ABCDEFGHIJKLMN O P Q R S T U V W X Y Z 1 2 3 4 5 6 7 8 9 0
abcdefghijklmnopqrstuvwxyz \$ % & / ' 1/2 1/4 3/4 --- = + x & @ *

1.5 mm (e = 1.09 mm)

1.5 mm (e = 1.09 mm)

ABCDEFGHIJKLMN O P Q R S T U V W X Y Z 1 2 3 4 5 6 7 8 9 0
abcdefghijklmnopqrstuvwxyz \$ % & / ' 1/2 1/4 3/4 --- = + x & @ *

ABCDEFGHIJKLMN O P Q R S T U V W X Y Z 1 2 3 4 5 6 7 8 9 0
abcdefghijklmnopqrstuvwxyz \$ % & / ' 1/2 1/4 3/4 --- = + x & @ *

2.0 mm (e = 1.37 mm)

2.0 mm (e = 1.37 mm)

ABCDEFGHIJKLMN O P Q R S T U V W X Y Z
abcdefghijklmnopqrstuvwxyz
1234567890 \$ % & / ' 1/2 1/4 3/4 --- = + x & @ *

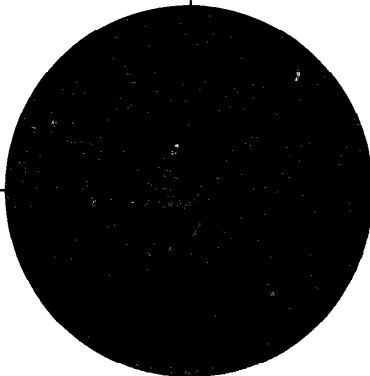
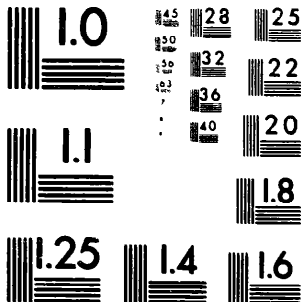
ABCDEFGHIJKLMN O P Q R S T U V W X Y Z
abcdefghijklmnopqrstuvwxyz
1234567890 \$ % & / ' 1/2 1/4 3/4 --- = + x & @ *

2.5 mm (e = 1.77 mm)

2.5 mm (e = 1.77 mm)

ABCDEFGHIJKLMN O P Q R S T U V W X Y Z
abcdefghijklmnopqrstuvwxyz
1234567890 \$ % & / ' 1/2 1/4 3/4 --- = + x & @ *

ABCDEFGHIJKLMN O P Q R S T U V W X Y Z
abcdefghijklmnopqrstuvwxyz
1234567890 \$ % & / ' 1/2 1/4 3/4 --- = + x & @ *



200 MM

250 MM

